

Space Available in Historic Mill

1 Mill Street, Suite 301, Burlington, VT 05401

Redstone

Size: 3,124 Sq. Ft.

This office space is available in the historic Chace Mill, offering a unique workspace in a character-filled mill building conveniently located between Burlington and Winooski.

Property Features:

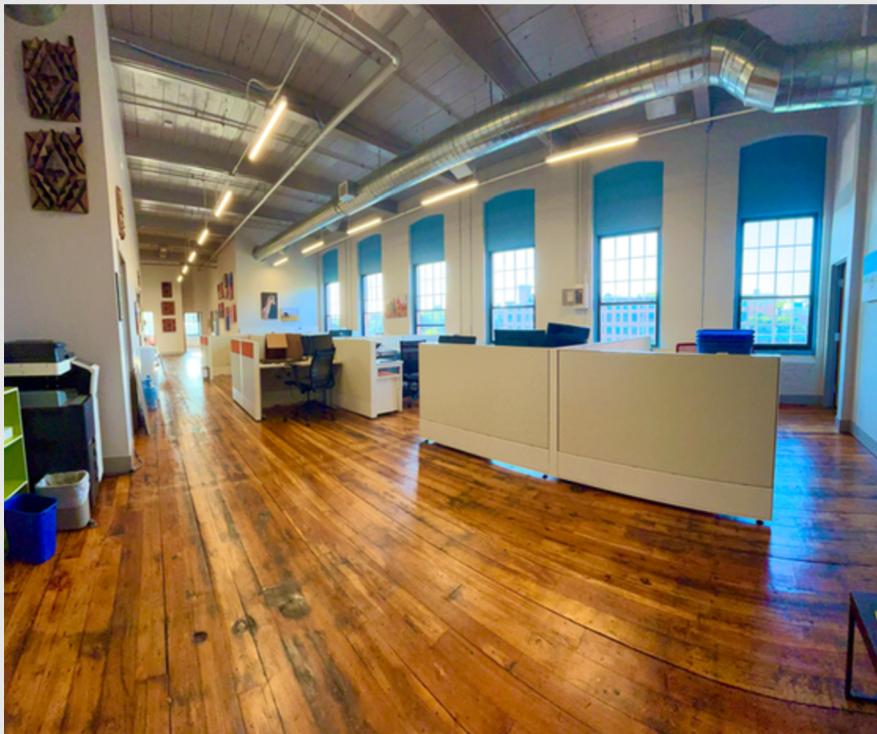
- Historic mill building with exposed brick and unique architectural character
- Scenic location along the Winooski River
- Convenient access to Downtown Burlington and Winooski
- Abundant natural light and distinctive loft-style spaces
- On-site parking available



Space Available in Historic Mill

1 Mill Street, Suite 301, Burlington, VT 05401

Redstone



Jeff Bak



802.371.7246



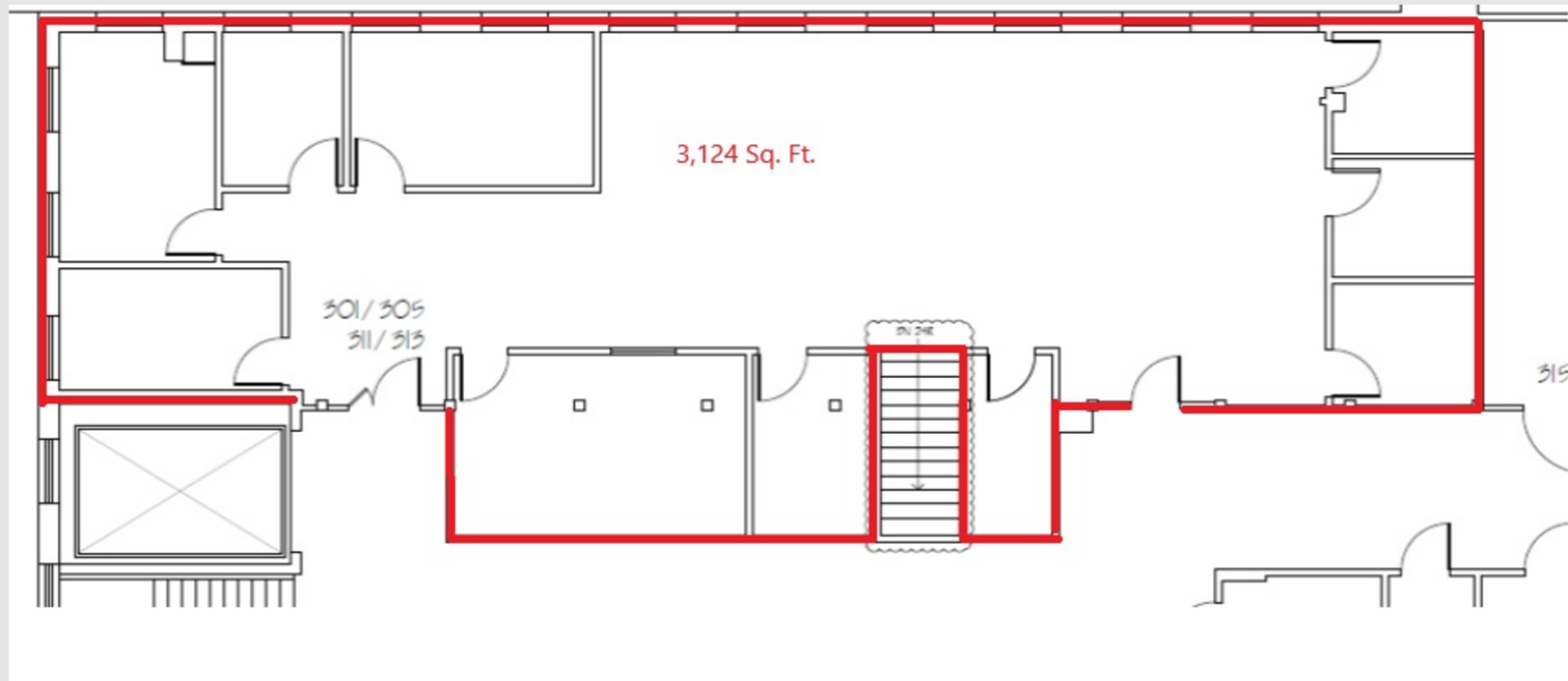
jbak@redstonevt.com

redstonevt.com

Space Available in Historic Mill

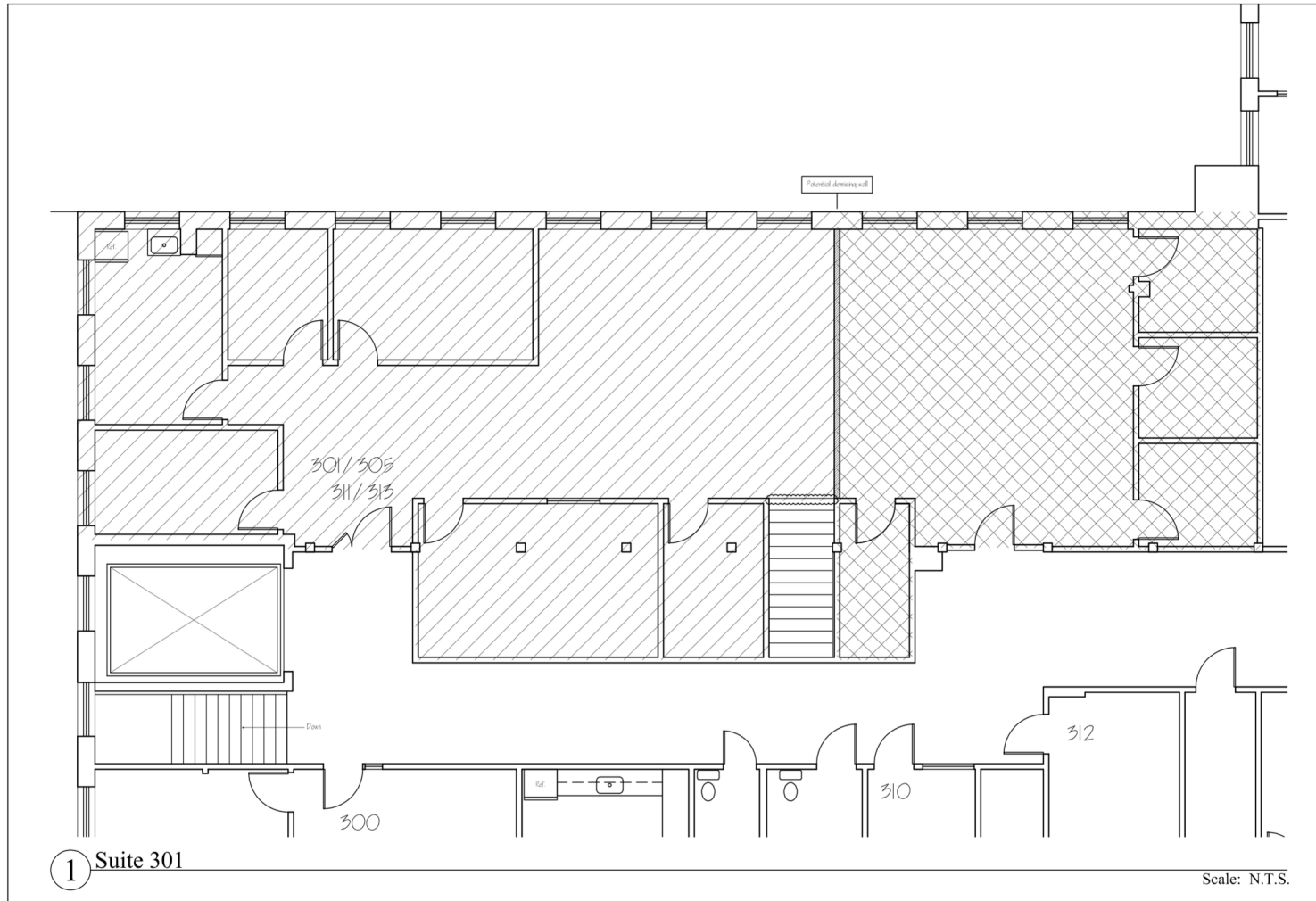
1 Mill Street, Suite 301, Burlington, VT 05401

Redstone



Space Available in Historic Mill

1 Mill Street, Suite 301, Burlington, VT 05401



Drawn By: PRK
Date: 02 FEB 2026

CHACE MILL
Burlington, Vermont
RAMSAY GOURD ARCHITECTS
PO Box 300 • 7190 Main Street • Manchester Village, VT
(802) 362-1480 • FAX (802) 362-0179

Suite 301
A-1.3

