

Space Available in Historic Mill

1 Mill Street, Suite 249, Burlington, VT 05401

Redstone

Size: 3,849 Sq. Ft.

This office space is available in the historic Chace Mill, offering a unique workspace in a character-filled mill building conveniently located between Burlington and Winooski.

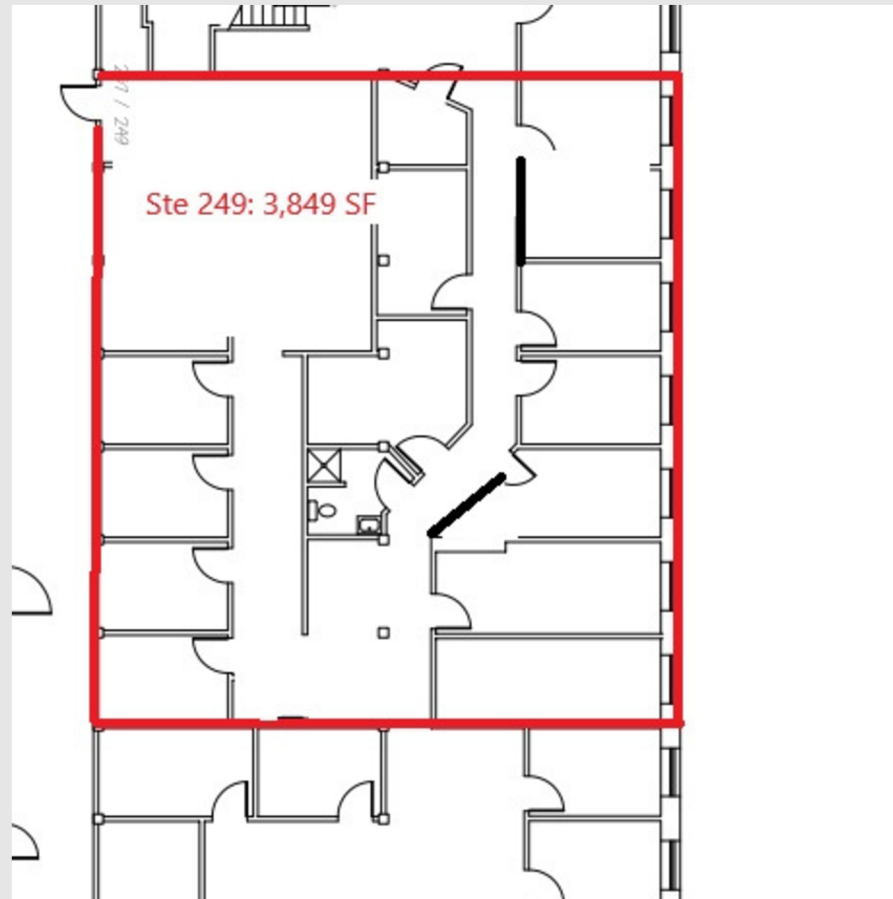
Property Features:

- Historic mill building with exposed brick and unique architectural character
- Scenic location along the Winooski River
- Convenient access to Downtown Burlington and Winooski
- Abundant natural light and distinctive loft-style spaces
- On-site parking available



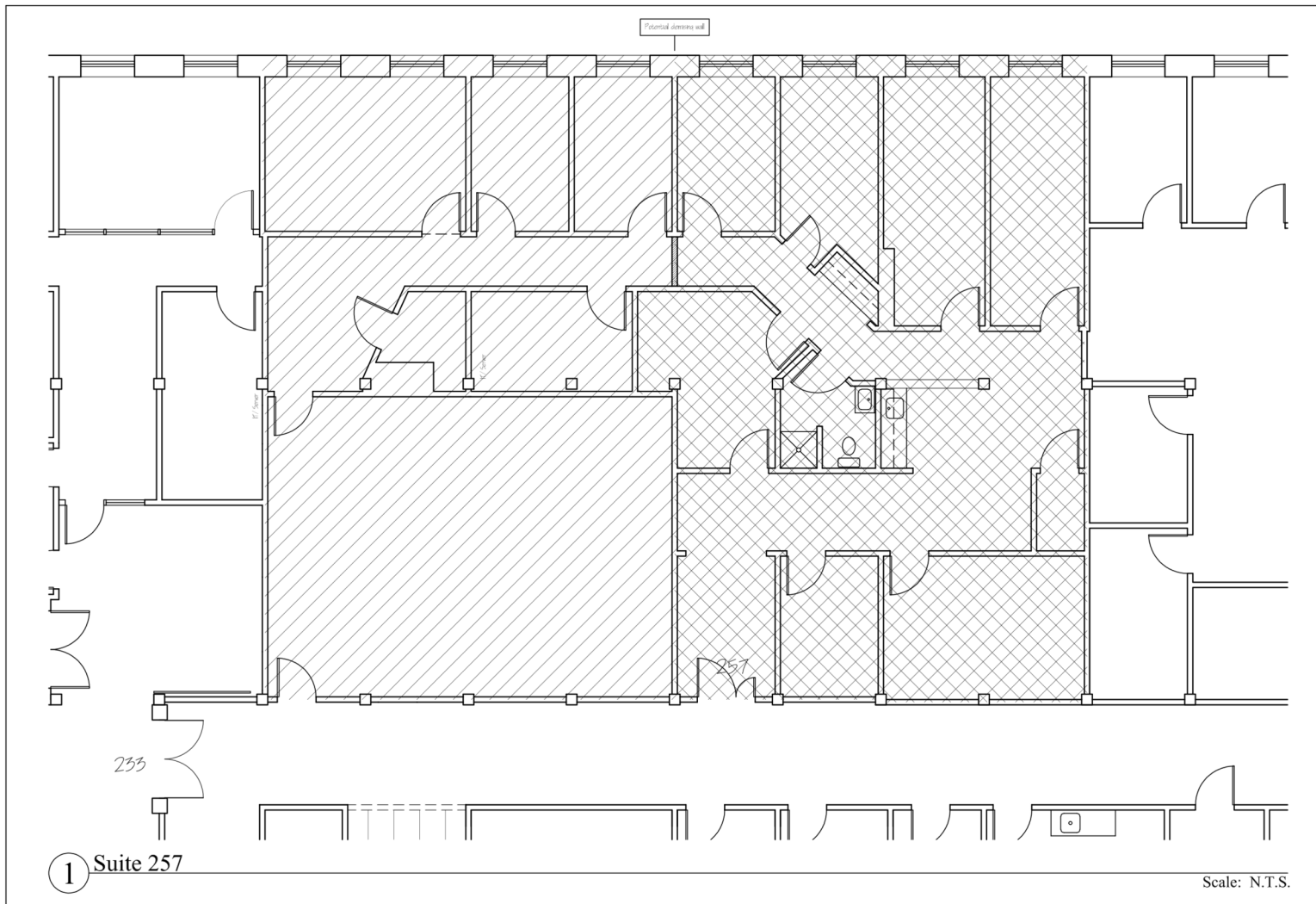
Space Available in Historic Mill

1 Mill Street, Suite 249, Burlington, VT 05401



Space Available in Historic Mill

1 Mill Street, Suite 249, Burlington, VT 05401



Drawn By: PRK
Date: 02 FEB 2026

C H A C E M I L L
Burlington, Vermont
RAMSAY GOURD ARCHITECTS
1 Mill Street
PO Box 300 • 7199 Main Street • Manchester Village, VT
(802) 862-1480 • FAX (802) 862-0179

Suite 257
A-1.2



