

Space Available in Historic Mill

1 Mill Street, Suite 190/290, Burlington, VT 05401

Redstone

Size: 3,478 Sq. Ft.

This office space is available in the historic Chace Mill, offering a unique workspace in a character-filled mill building conveniently located between Burlington and Winooski.

Property Features:

- Historic mill building with exposed brick and unique architectural character
- Scenic location along the Winooski River
- Convenient access to Downtown Burlington and Winooski
- Abundant natural light and distinctive loft-style spaces
- On-site parking available



Space Available in Historic Mill

1 Mill Street, Suite 190/290, Burlington, VT 05401

Redstone



Jeff Bak



802.371.7246



jbak@redstonevt.com

redstonevt.com

Space Available in Historic Mill

1 Mill Street, Suite 190/290, Burlington, VT 05401

Redstone



Jeff Bak



802.371.7246

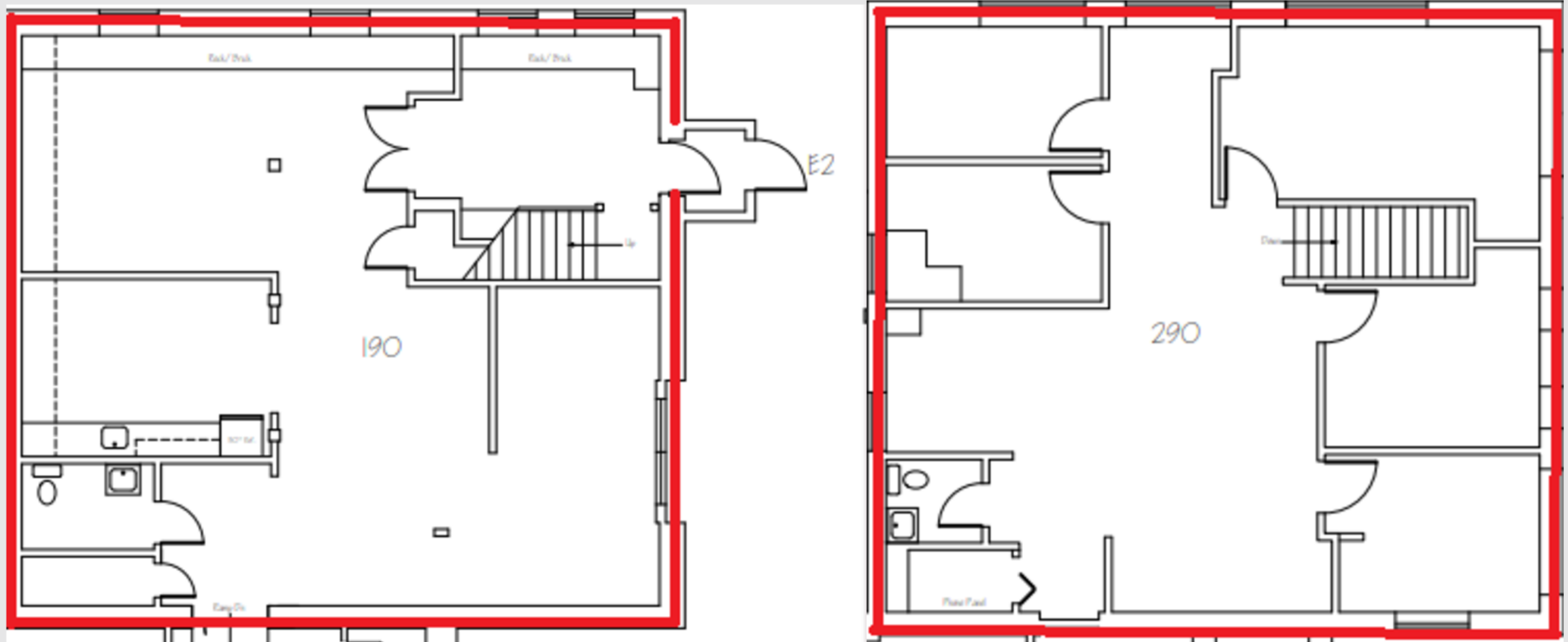


jbak@redstonevt.com

redstonevt.com

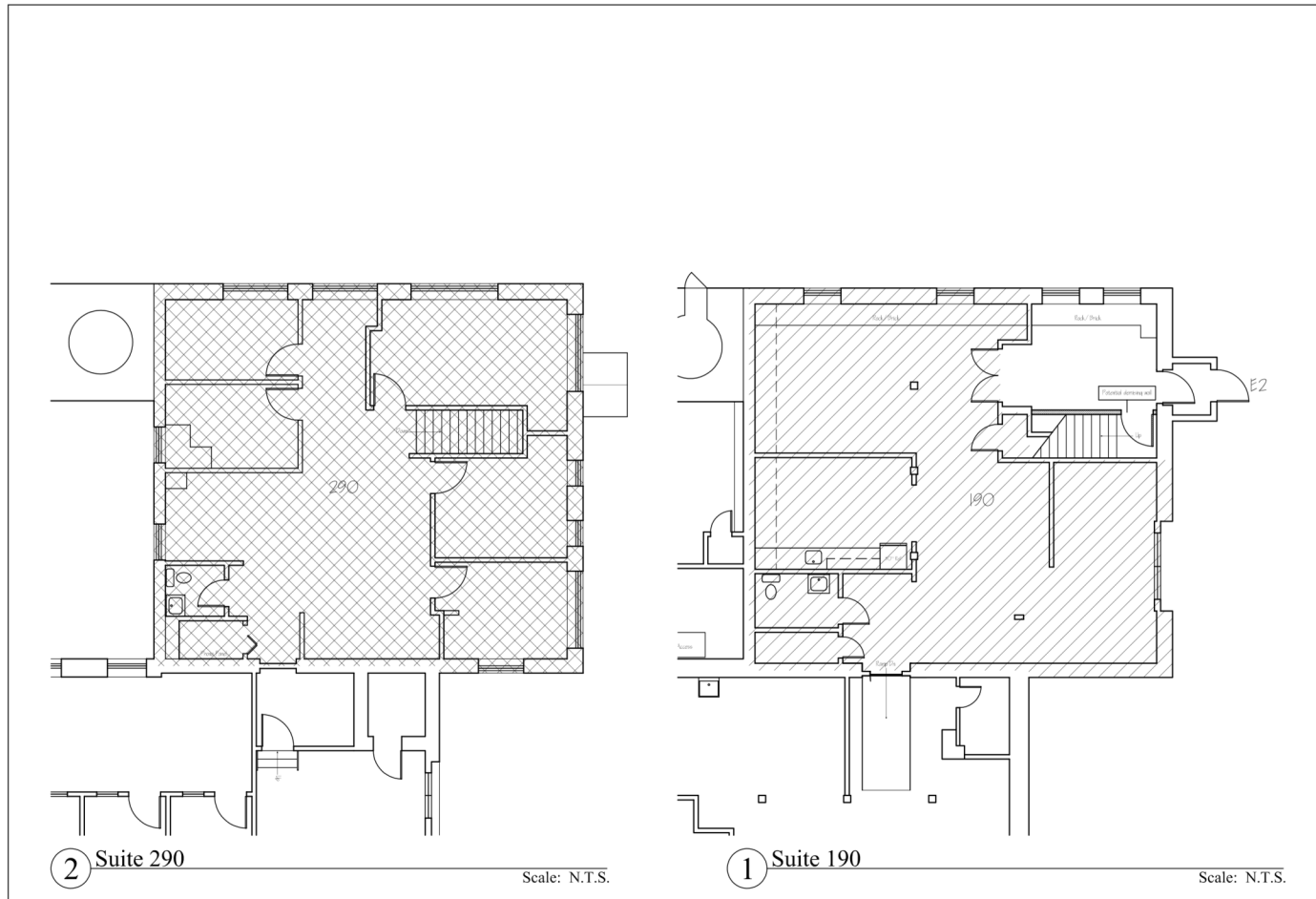
Space Available in Historic Mill

1 Mill Street, Suite 190/290, Burlington, VT 05401



Space Available in Historic Mill

1 Mill Street, Suite 190/290, Burlington, VT 05401



Drawn By: PRK
Date: 02 FEB 2026

CHACE MILL
Burlington, Vermont
RAMSAY GOURD ARCHITECTS
(802) 362-1488 • FAX (802) 862-8179

1 Mill Street
PO Box 300 • 190 Main Street • Manchester Village, VT

Suite 109 & 290
A-1.1



